

THE MUNICIPALITY OF MILAN AND THE CHALLENGES OF INTEGRATION: A FOCUS ON FAMILY REUNIFICATION

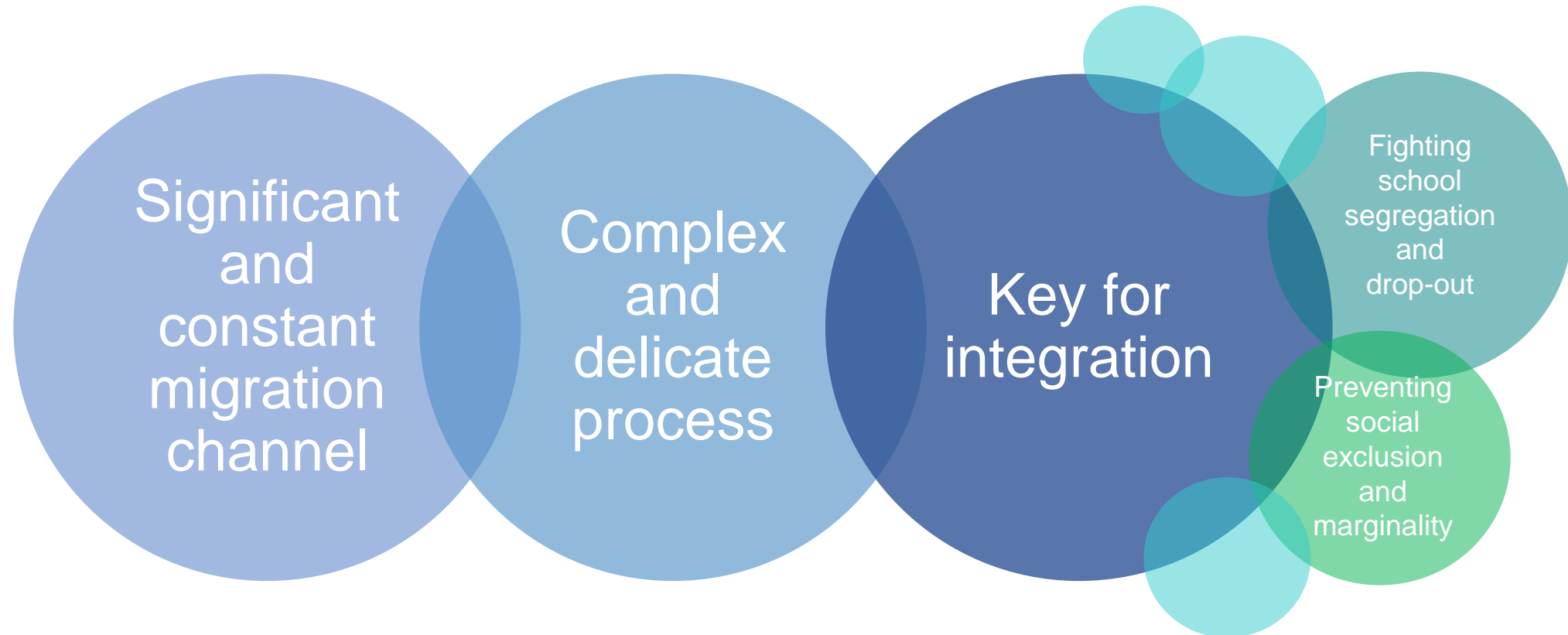
Local data, Local actors, Global challenges

Rosanna Sucato and Roberta Mascaretti

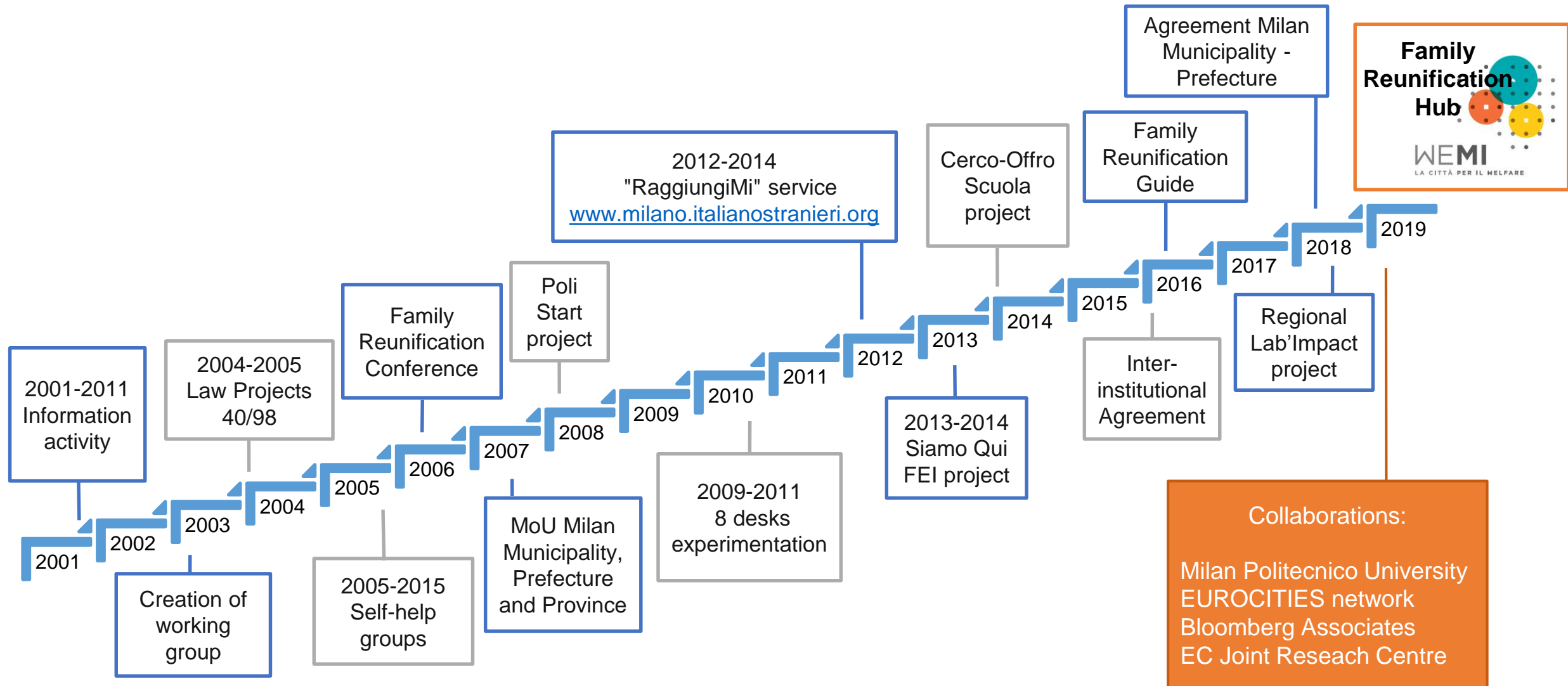
(Municipality of Milan, Social Policies Department)

With the Knowledge Centre on Migration and Demography, EC-JRC Ispra

FAMILY REUNIFICATION IN MILAN



FAMILY REUNIFICATION PATH (2001-2019)



COLLABORATIVE TOOLS TO REACH THE GOALS

Family reunification App and Hub



my Journey

Benvenuto in MyJourney! **INIZIA**

Welcome to MyJourney! **START**

Bienvenue à MyJourney! **COMMENCEZ**

Bienvenido a MyJourney! **INICIA**

مرحبًا بك في MyJourney! **بدأ**

欢迎来到MyJourney! **开始**

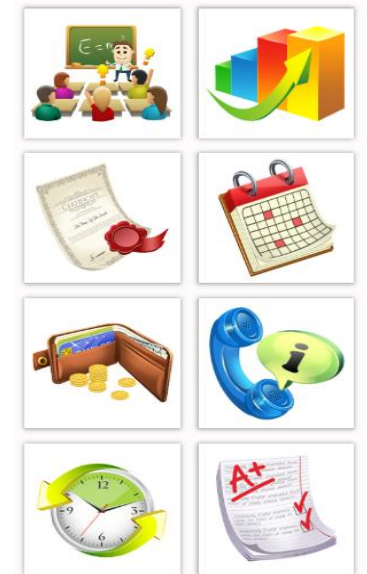
RAGGIUNGIMI

Il Comune di Milano per il ricongiungimento familiare

Informazioni, orientamento
e supporto a persone
e famiglie nel percorso
del ricongiungimento familiare



CENTRO SERVIZI



COLLABORATIVE TOOLS TO REACH THE GOALS

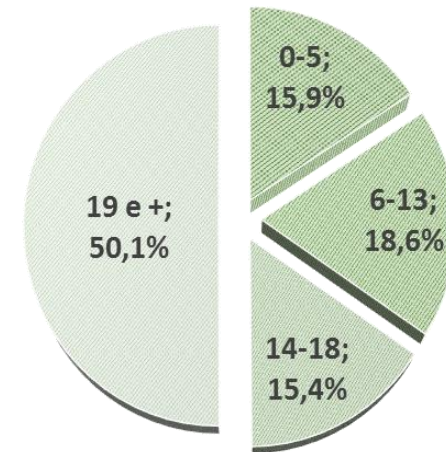
“Welcome to Milan” Guide



Step 1 : Collaboration Agreement between Milan Municipality and Prefecture

Issued «Nulla Osta»		
	N° of applicants	N° of reunited members
Aug-Dec 2018	503	802
Jan-Sept 2019	700	1131
Total	1203	1933
Monthly average 2018	101	160
Monthly average 2019	78	126
Total monthly average	86	138

Distribution of authorised family members
by age groups



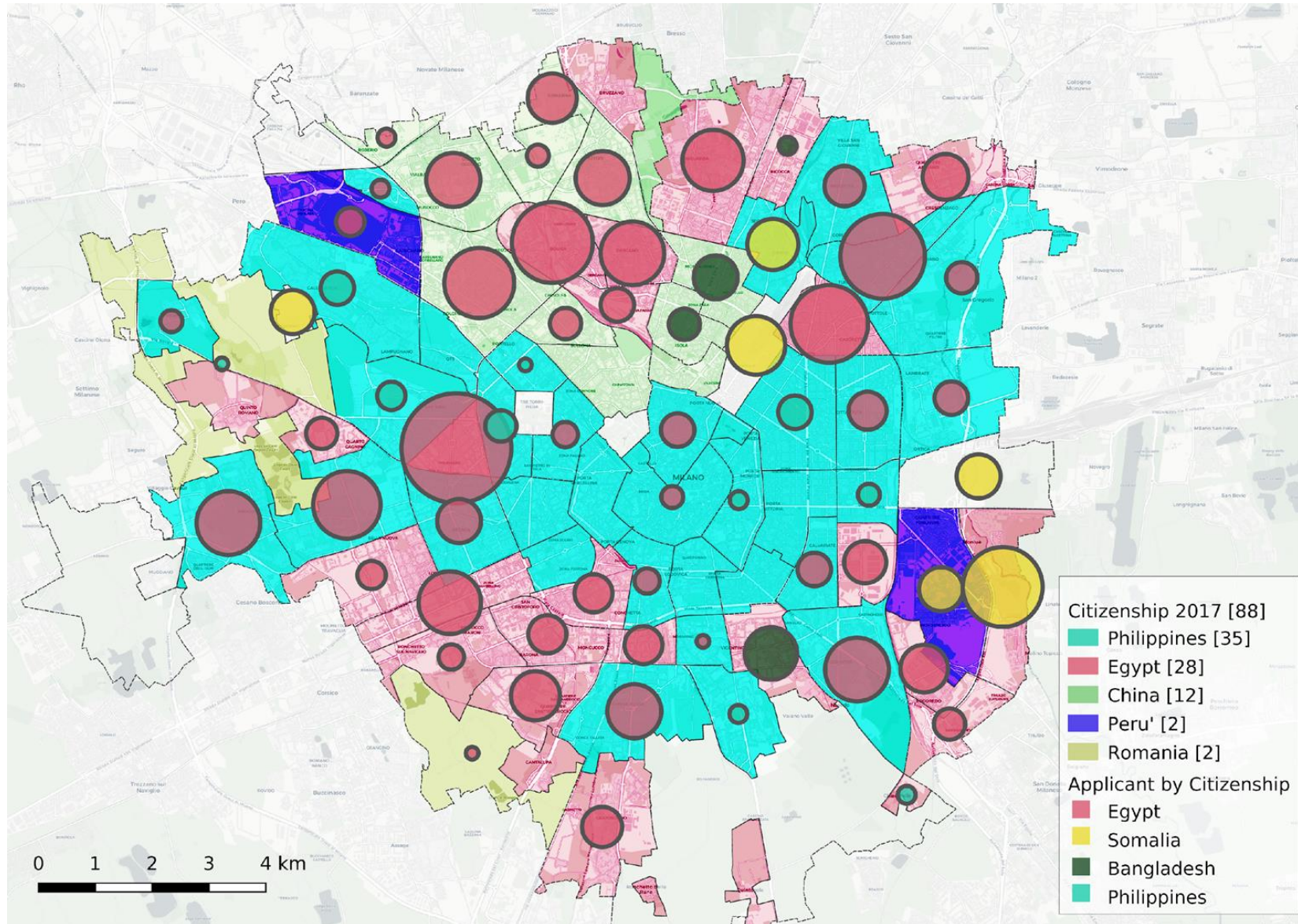


Comune di
Milano

Step 2: Collaboration with the EC Joint Research Centre



JRC
EUROPEAN COMMISSION



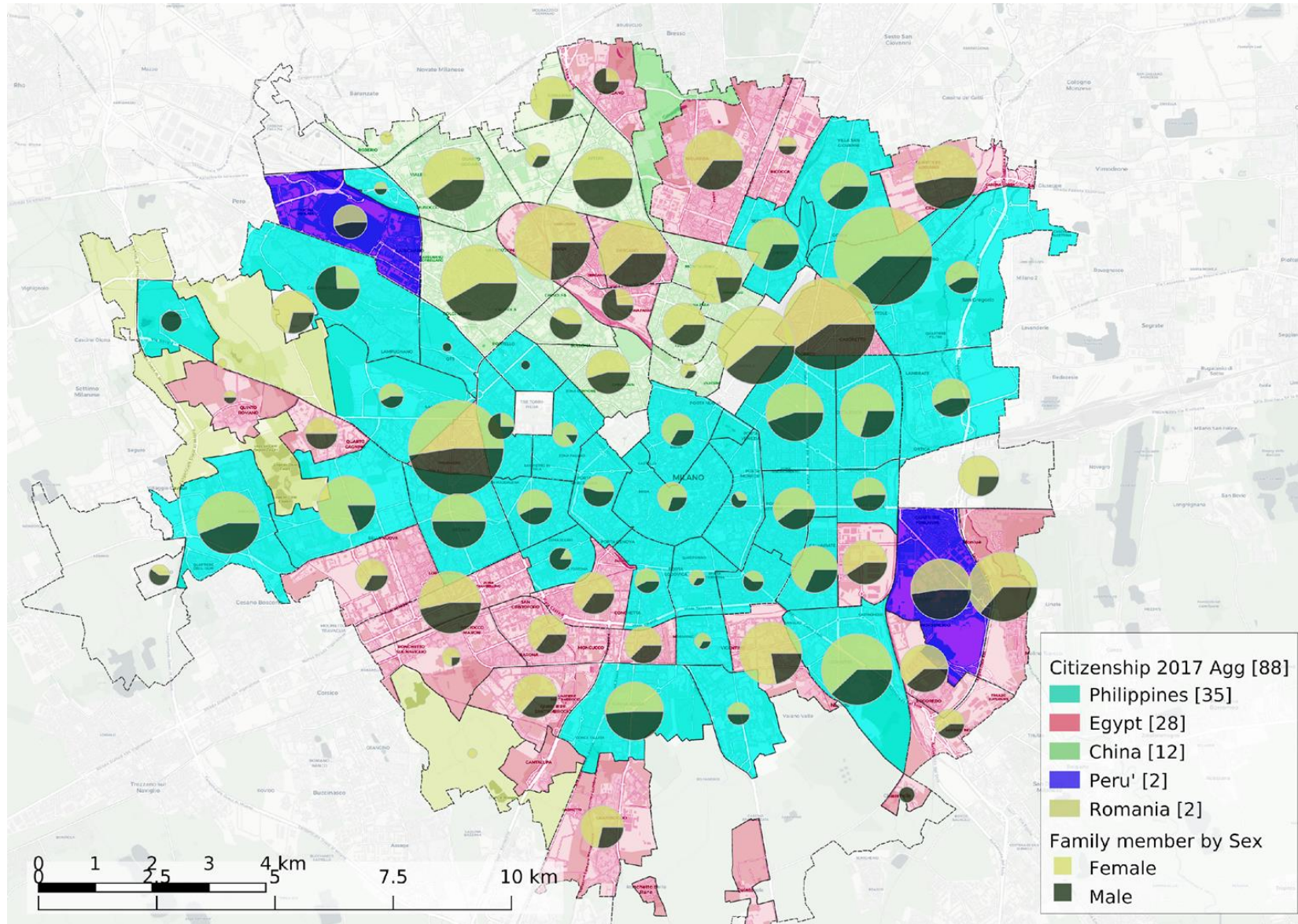


Comune di
Milano

Step 2: Collaboration with the EC Joint Research Centre



JRC
EUROPEAN COMMISSION



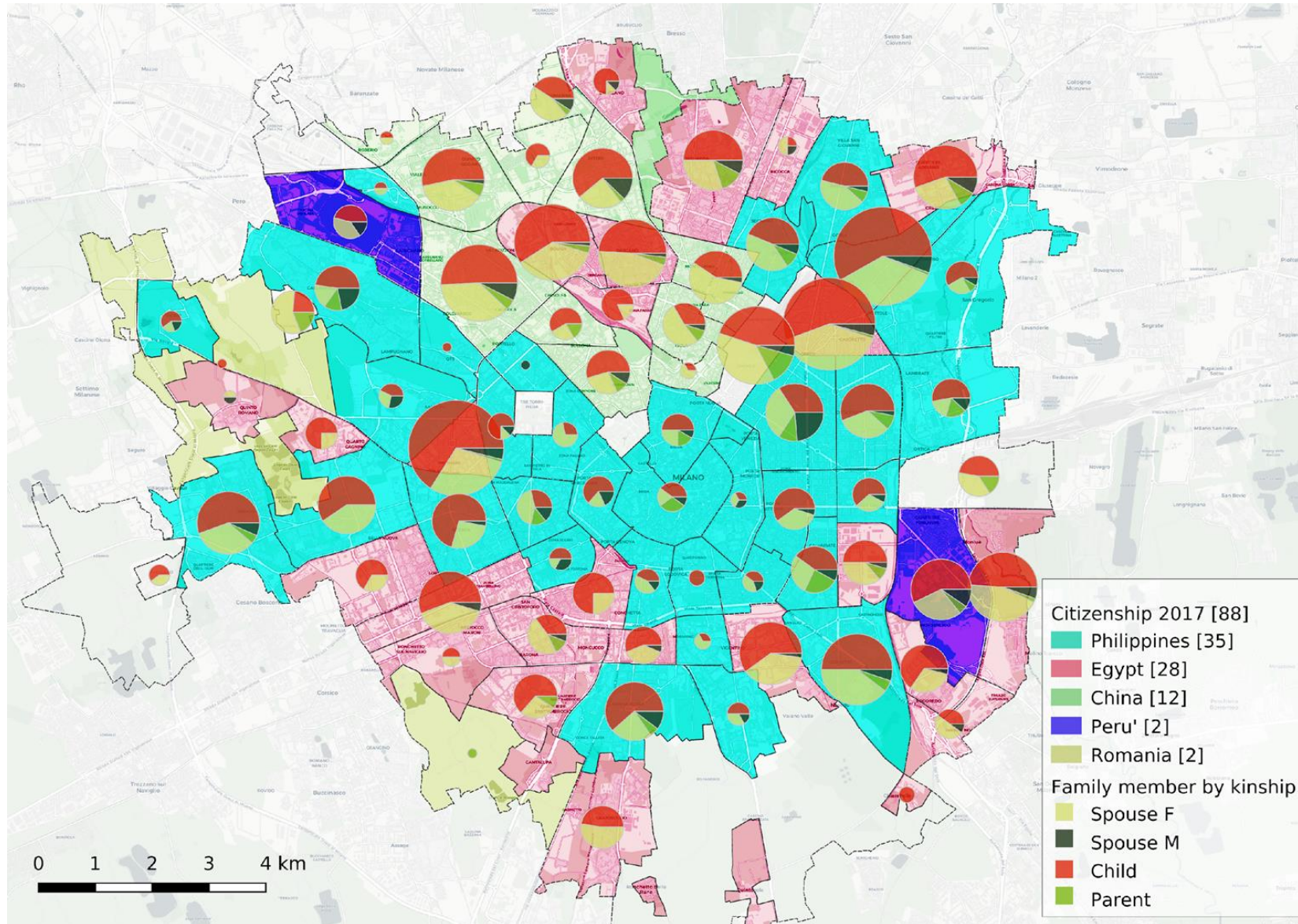


Comune di
Milano

Step 2: Collaboration with the EC Joint Research Centre



JRC
EUROPEAN COMMISSION



CHALLENGES



 Inter-institutional collaboration

 Harmonisation of data

 Confidentiality & Privacy

THANK YOU



Roberta Mascaretti

roberta.mascaretti@comune.milano.it

Rosanna Sucato

rosanna.sucato@comune.milano.it

Guido Tintori

guido.tintori@ec.europa.eu