



**Gemeente
Amsterdam**

Financial Instruments for Integration of Migrants on the Level of Cities

The Amsterdam Approach

**Niels Tubbing
City of Amsterdam**

**Sr. Policy Advisor Civic Integration of Migrants and Refugees
Vice-chair EUROCITIES Working Group Migration & Integration**

7 januari 2020



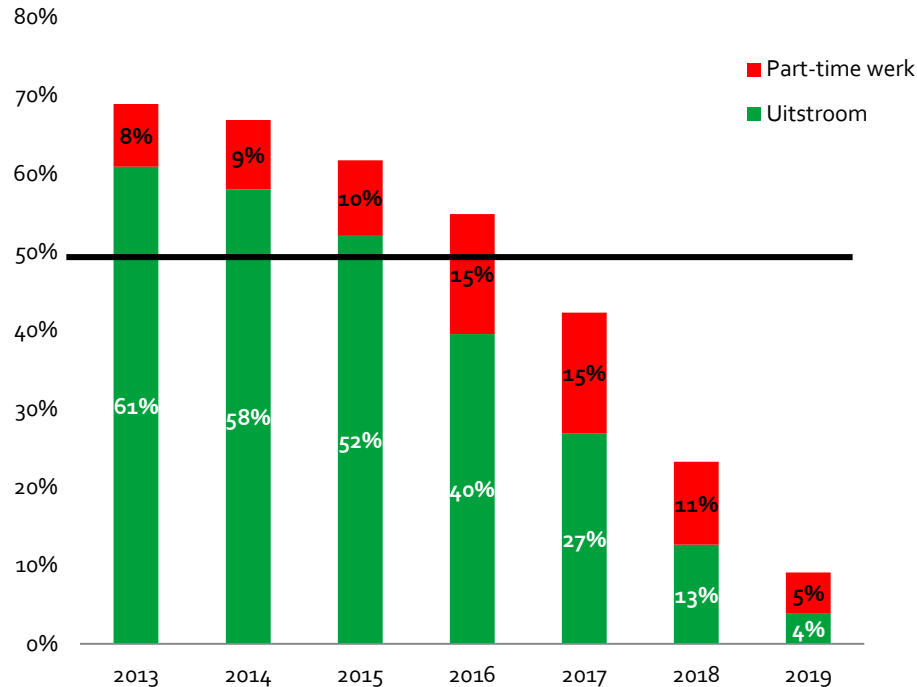
Topics

- The Amsterdam Approach to Asylum Statusholders
- EU Funding for Integration – City Level
- Innovative Financial Schemes
- Q&A



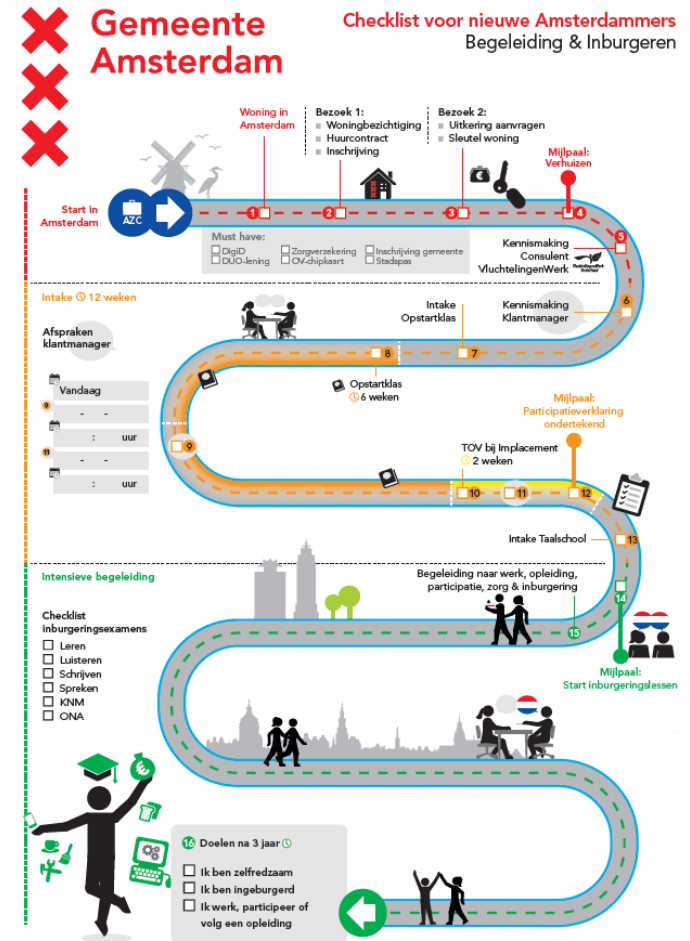
Numbers in recent years

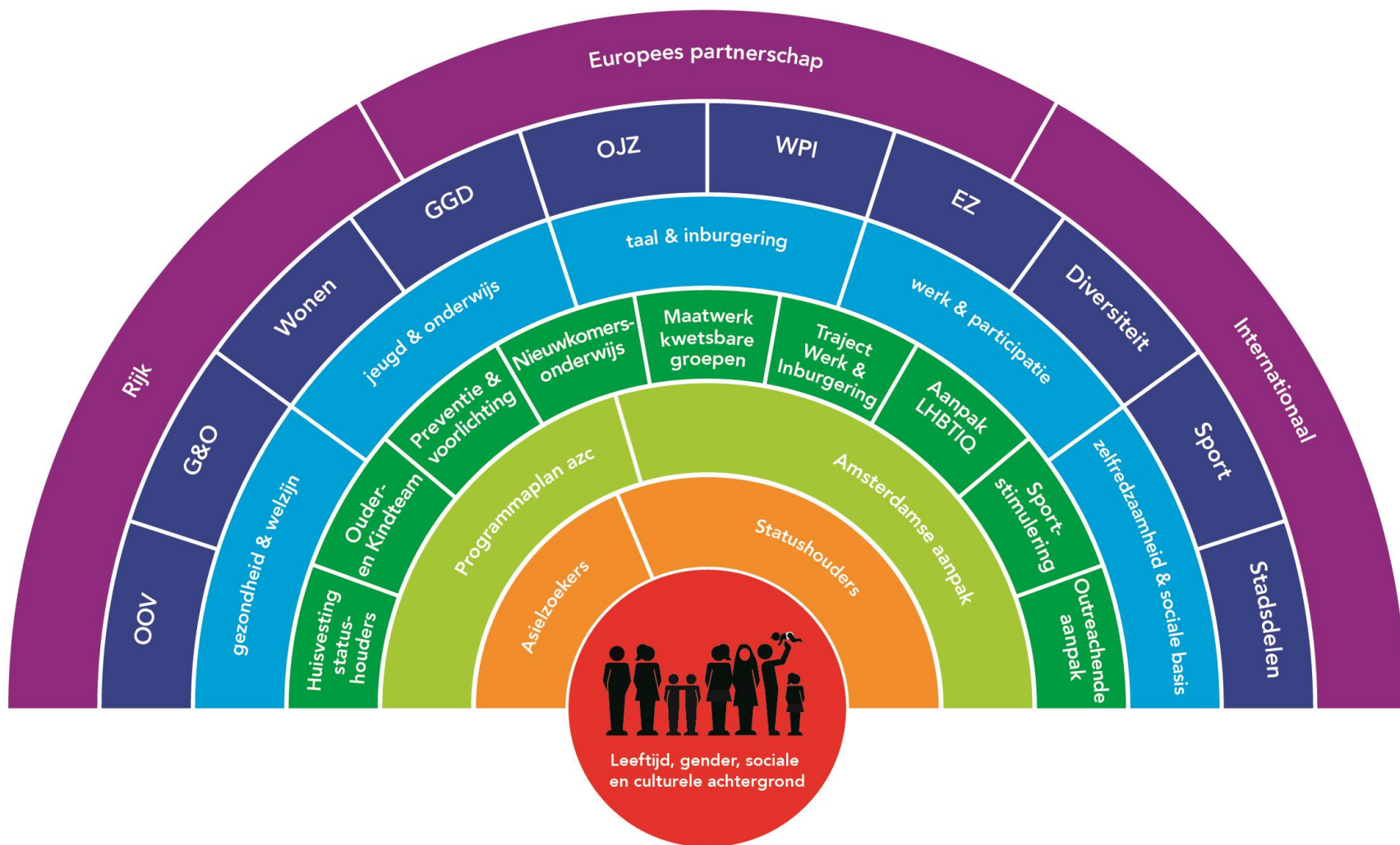
- In 2016: 2000 status holders came to Amsterdam
- In 2017: 1600 status holders came to Amsterdam
- Now in total: 5900 status holders in our program
- Mission: after 3 years 50% status holders financially independent



Amsterdam Approach to Status Holders

- Dual approach Work / Education & Integration
- A customized approach
- Team of dedicated case managers working closely together with our team of jobhunters
- Knowledge of diverse languages (Arabic, Tigrinya, Farsi)
- Intensive support and guidance (Caseload 1 to 50)
- Earlier and faster access to work & education
- Broad approach combining various Municipal Departments (like healthcare, housing, poverty reduction)
- Participation programs and social counseling







EU Funding for Integration

- AMIF (Language and Orientation Program, VALUES)
- ESF (funding for staff in case management)
- But: issues for cities in accessing these funds / using them



Partnership for Inclusion of Migrants and Refugees



- 2016: the Pact of Amsterdam: European cities will be more involved with the creation of EU legislation, EU funding and knowledge sharing
- Urban Agenda Partnership on Inclusion to develop ideas and concrete actions to support the integration of refugees and other migrants in Europe and their cities.
- One focus area that of *innovative financial instruments*



AMIF / ESF (/ ERDF)

- Increase synergies
- Decrease red tape
- Focusing on results rather than costs
- Flexibility
- More direct access for cities



Microfinancing

- EIB → EIF → National Credit → Local Government → Migrant Entrepreneur
- EaSI – pilot for provision of business development services (BDS) to refugees and migrants (1 M)
- Issues: through national intermediary no credit provided due to
 - temporary resident status
 - lack of guarantees / sponsors and own financial input
 - same conditions as regular loan requests (principle of equality)
- Broadening set of requirements in the pilot



Private Sponsorship for Refugees

Strengthening the Foundation for Community-based Refugee Sponsorship in Europe'

- Successful model in Canada
 - Different political and social landscapes
 - Who is responsible for what?
-
- Exploring ways to start a pilot aimed at integration into the labour market



Thank you for your time!

Questions?

CONTACT

Niels Tubbing
n.tubbing@amsterdam.nl

0031 6 531 334 65